

CLIMATE CHANGE ALL CHANGE

Empowering the next generation to design a better future



Introduction

Alistair Donaldson

14.05-14.30

The Big Reveal

Madi, Jamie, Rosy and Melissa

14.05-14.30

Wrap up

Alistair Donaldson

14.30

A chance to view the childrens work up close

14.30-14.55

Please join us at the Tobacco Factory

15.00 onwards

Meet the Designers

ARUP

ALLFORD
HALL
MONAGHAN
MORRIS



Madi Sacramone
Landscape Architect
ARUP



Jamie Ferguson
Architectural Assistant
ARUP



Rosy Jones
Architect
AHMM



Melissa Forsey
Senior Architect
AHMM

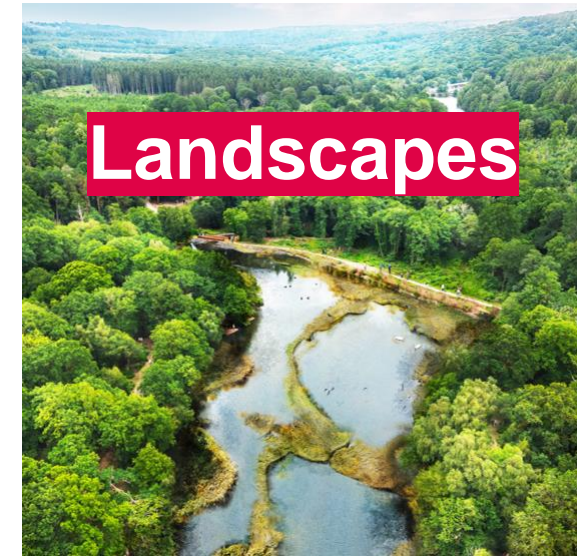
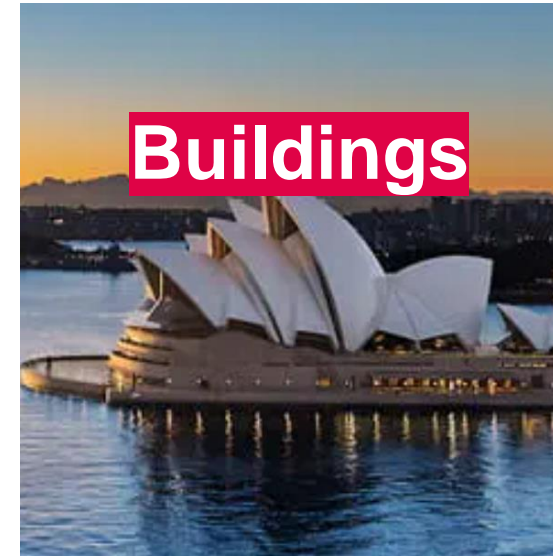
Arup

Who are we?

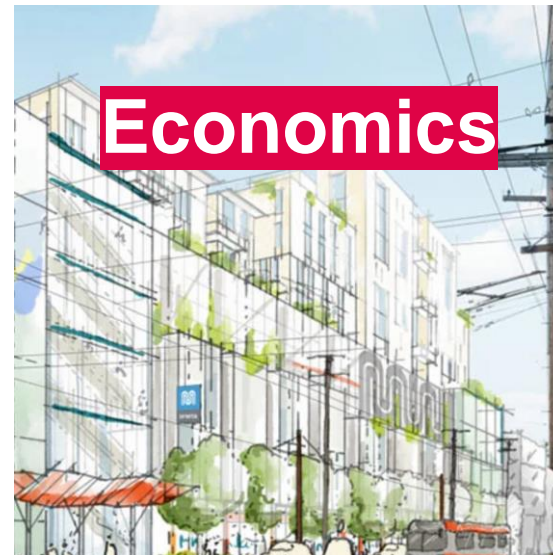
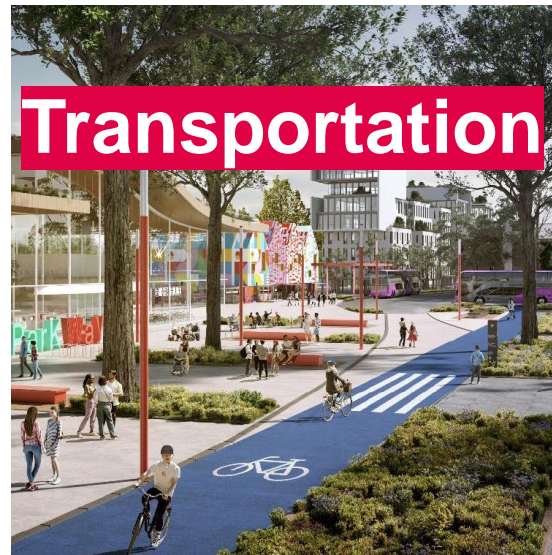


Arup

What we do?



We provide a variety of services for the built environment.
Designing places for people & nature.



**Arup
Placemaking**

Architecture

Landscape

**Urban
Design**

**City
Economics**



Allford Hall Monaghan Morris Architects

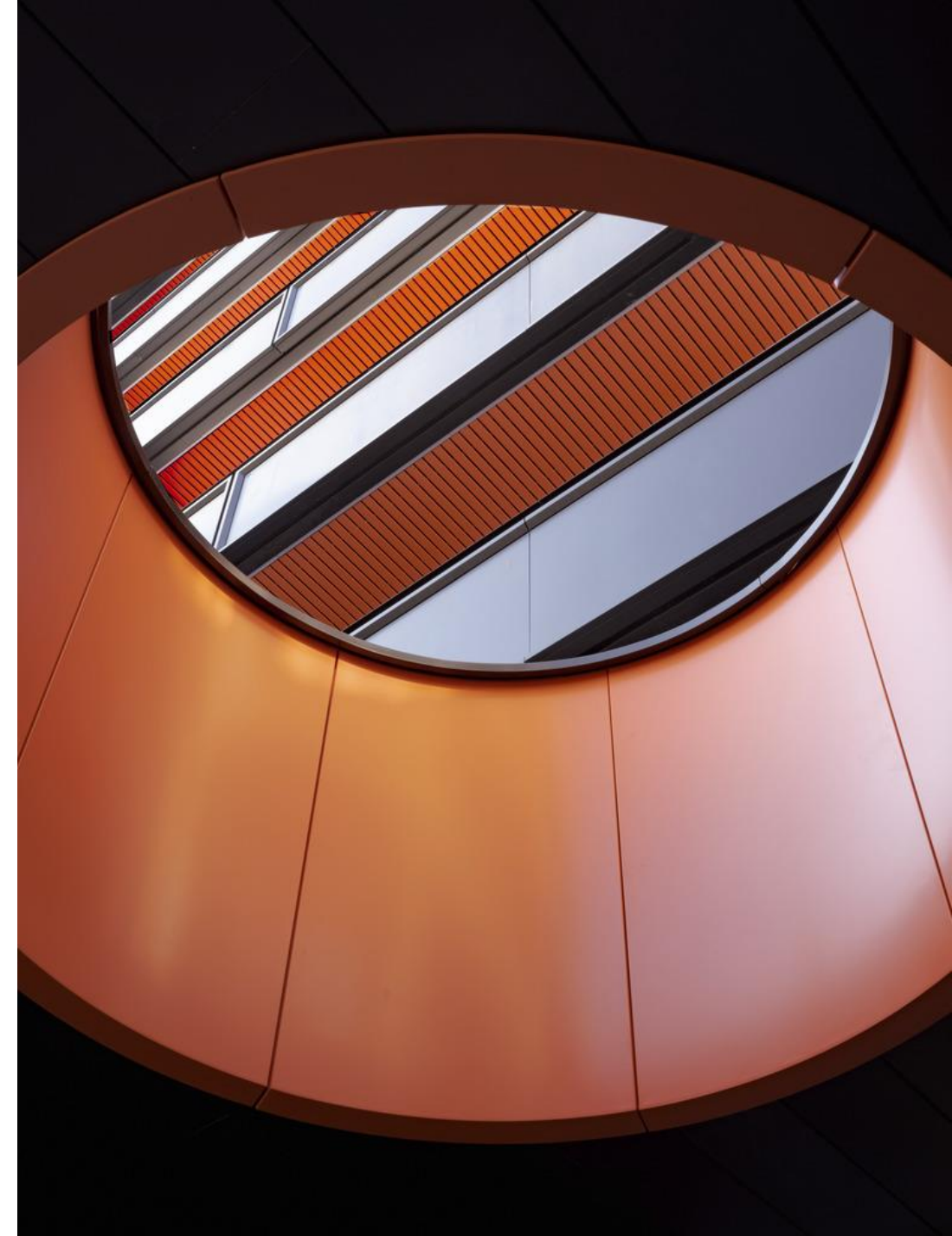
Who are we?



What we do...masterplanning, building design and interior design



Including our own office in Bristol



The Challenge

Flood levels in Bristol are predicted to rise due to climate change and by 2124 the city and its people will need to adapt. We challenged the students to join us and become climate champions



Summer maximum temperature is projected to increase by over

+9°C



Sea level on Bristol's coastline is projected to increase by up to

+72cm



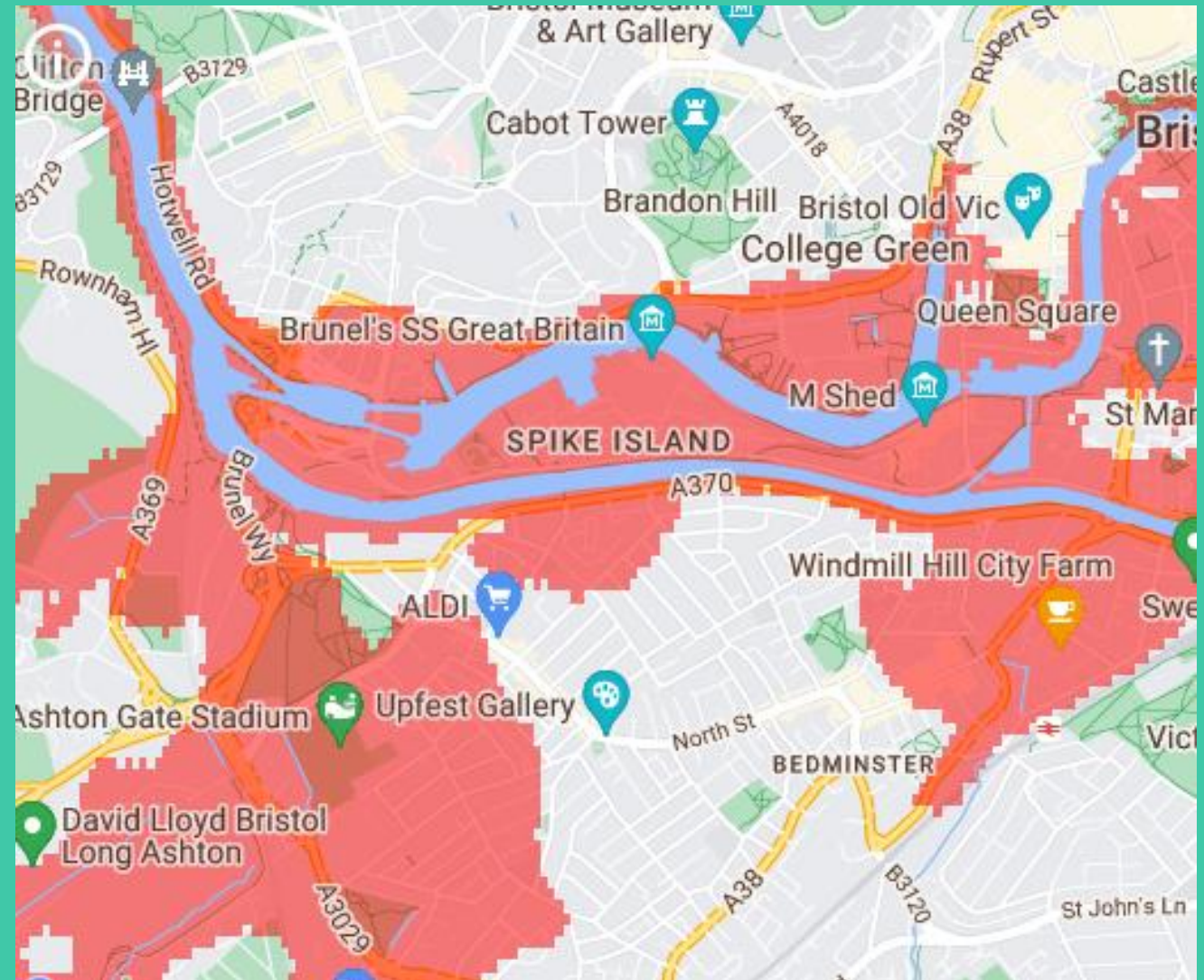
By 2080, summer precipitation rate in Bristol is projected to decrease by up to

68%



Winter precipitation rate is projected to increase by up to

48%



The Site



Ashton Gate Primary School

Week 1 – The Site Visit



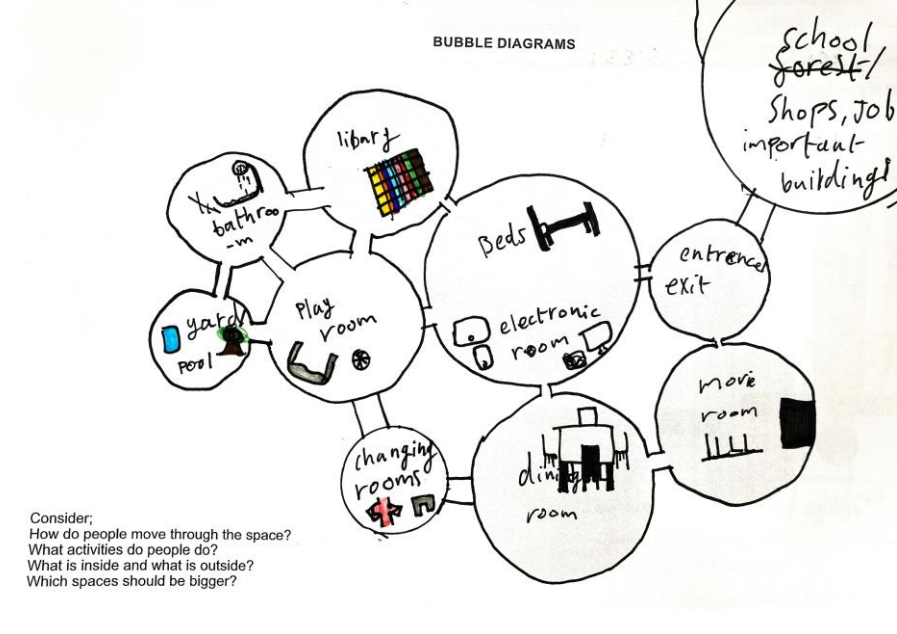
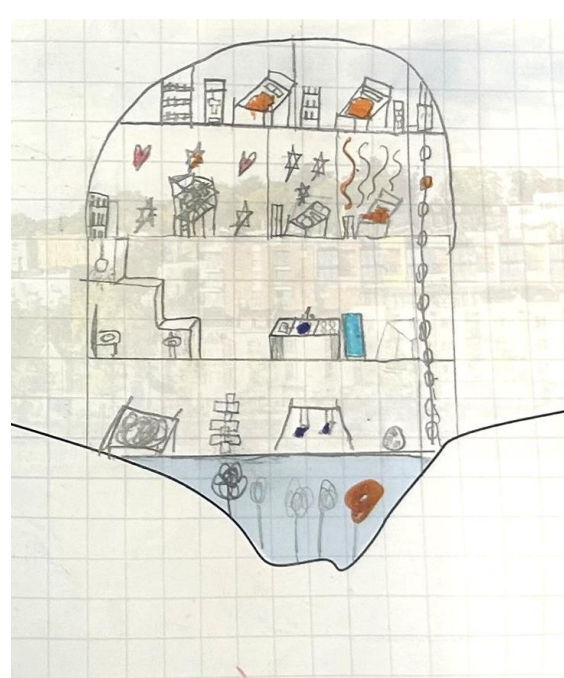
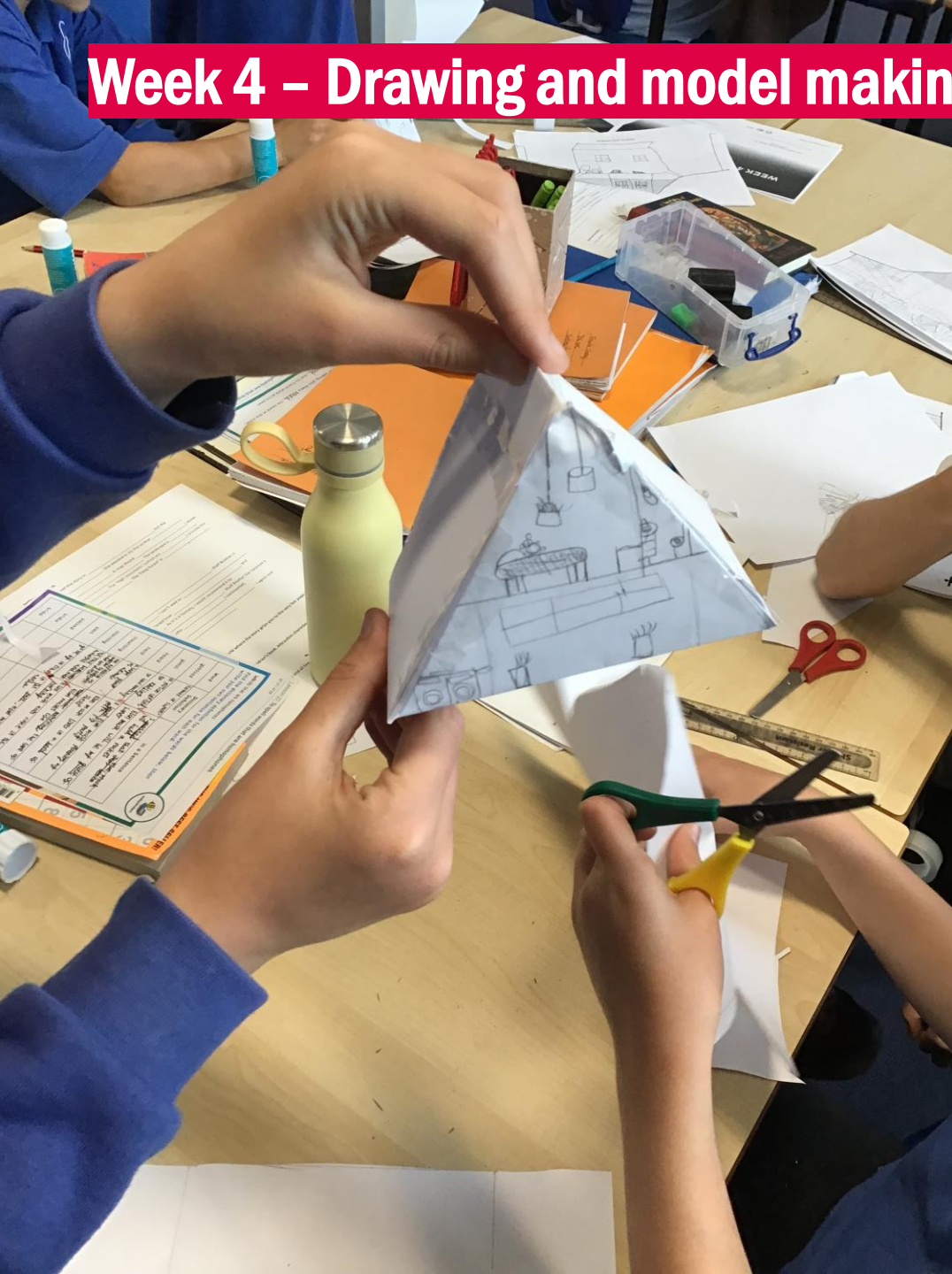
Week 2 - Exploring flood defences



Week 3 – Testing and Materials



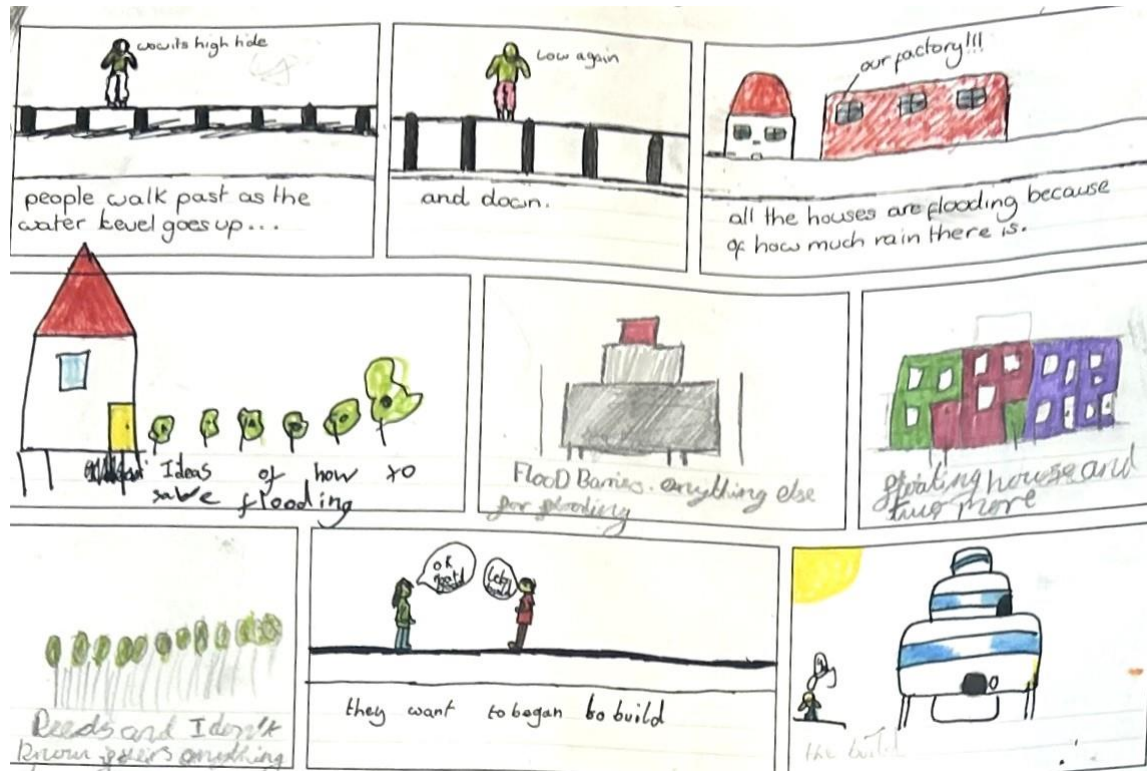
Week 4 – Drawing and model making



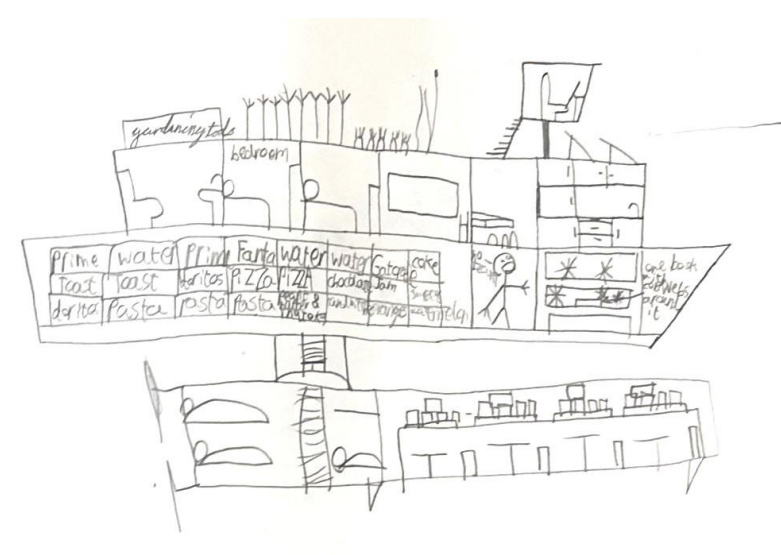
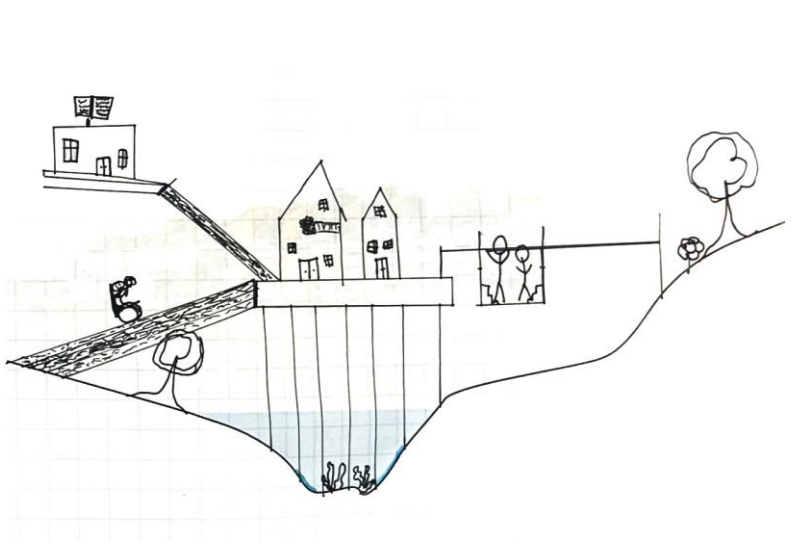
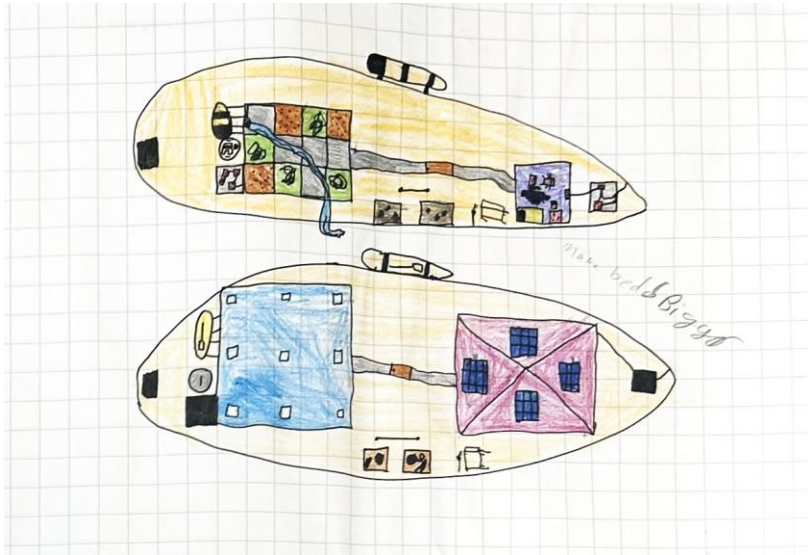
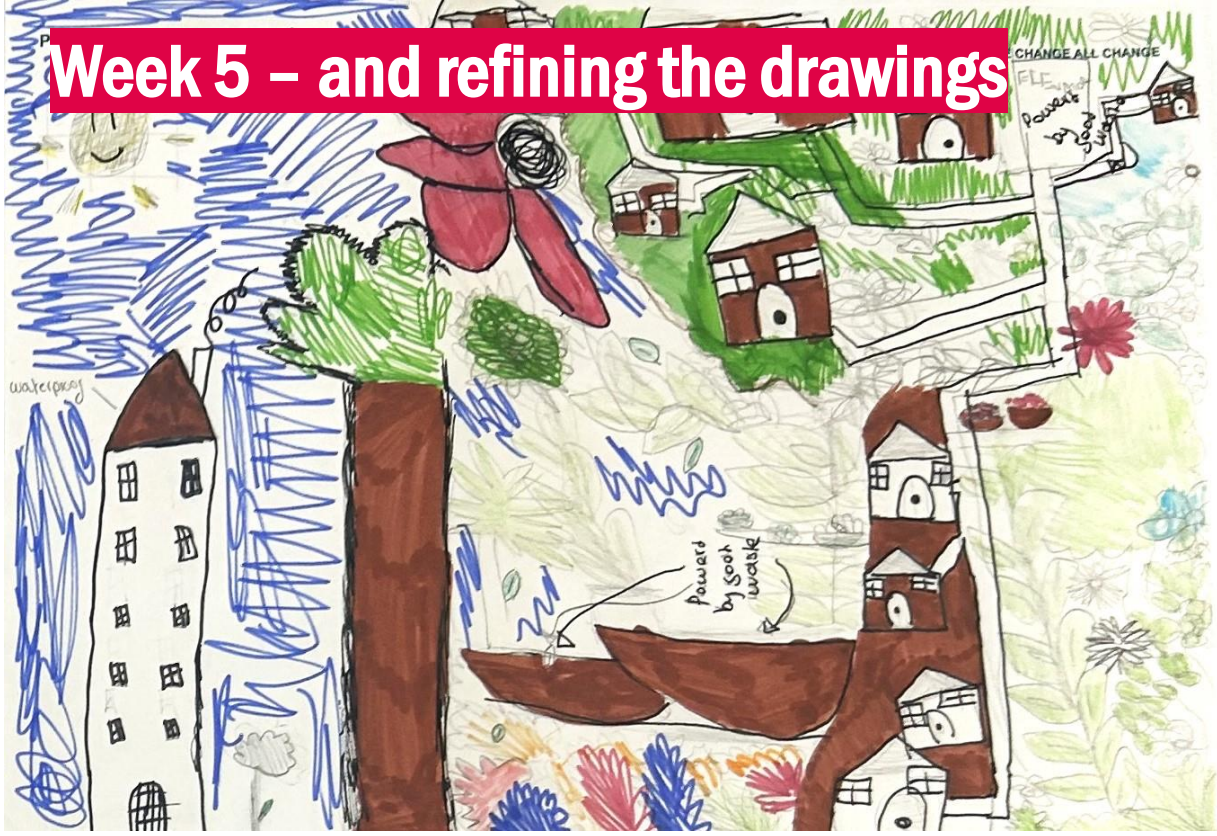
Consider;
How do people move through the space?
What activities do people do?
What is inside and what is outside?
Which spaces should be bigger?



Week 5 – Finalising the story



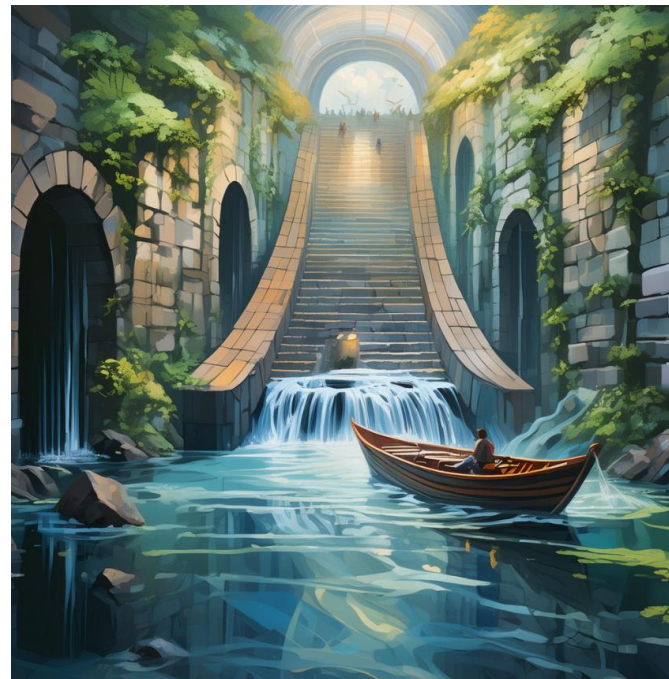
Week 5 – and refining the drawings



Week 5 – models



Week 5 – and exploring AI!



Week 6 – Presentations and feedback

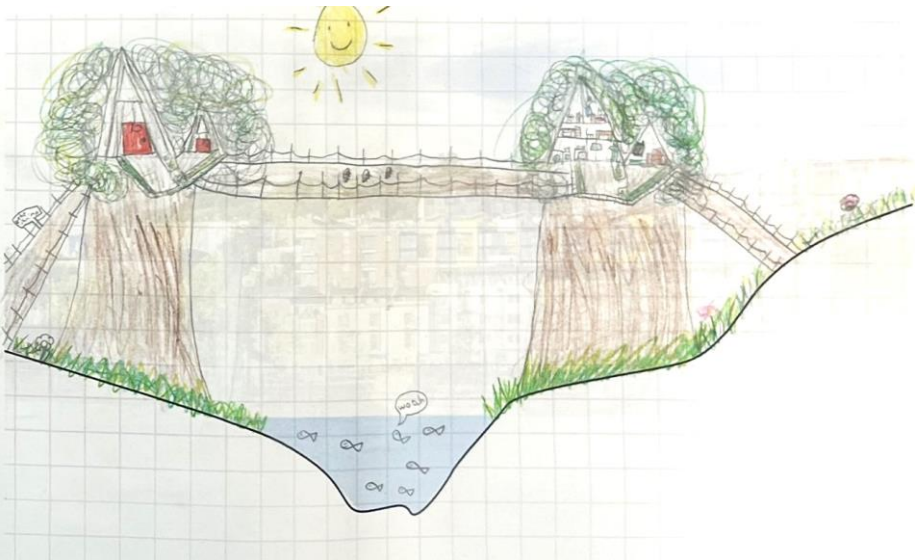


The AHMM visualisers begin work

modelling the students' sketches



Life in the trees

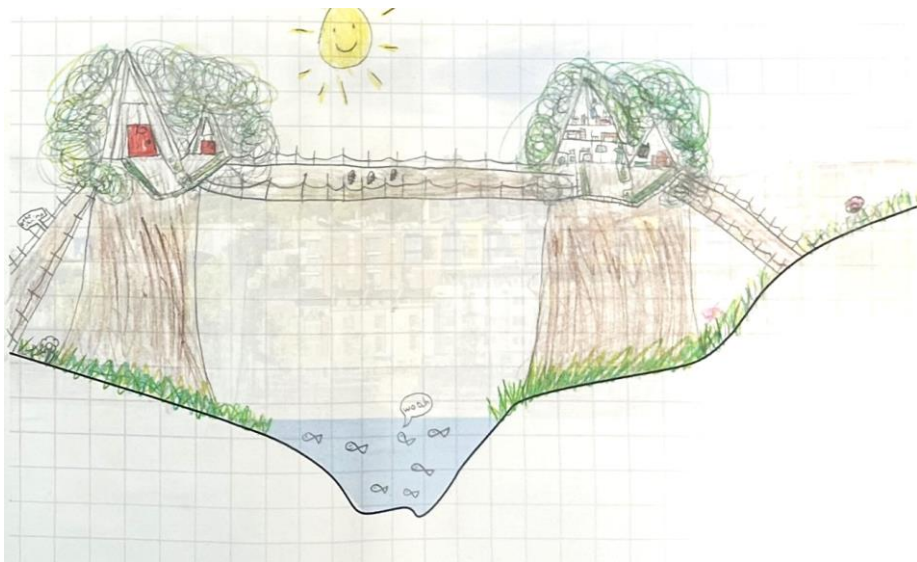


Life in the trees

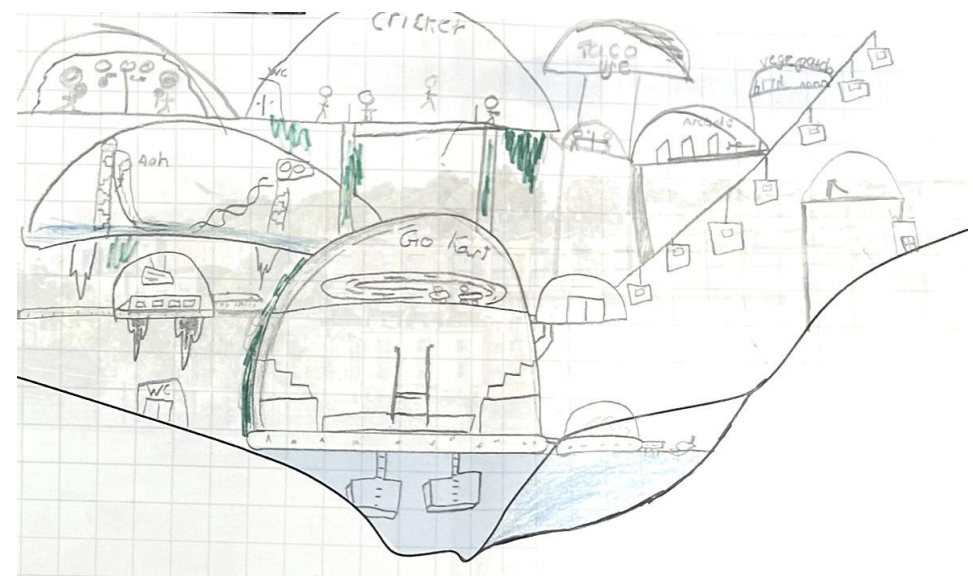


Zipline access and
flood escape

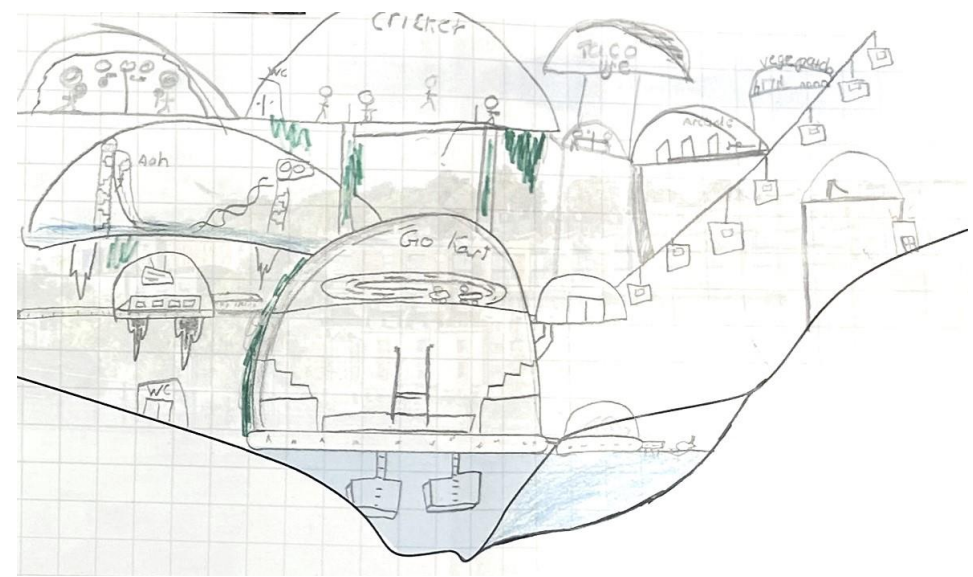
Photovoltaic energy
systems



City of domes

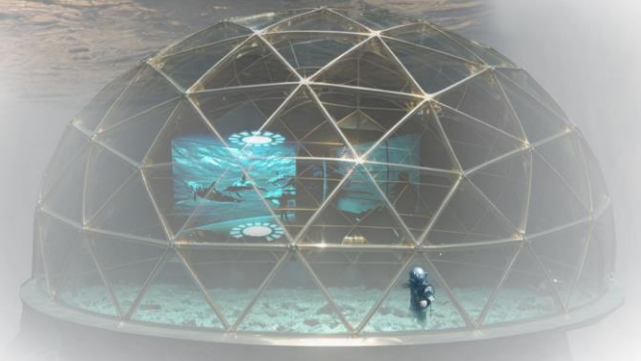


City of domes

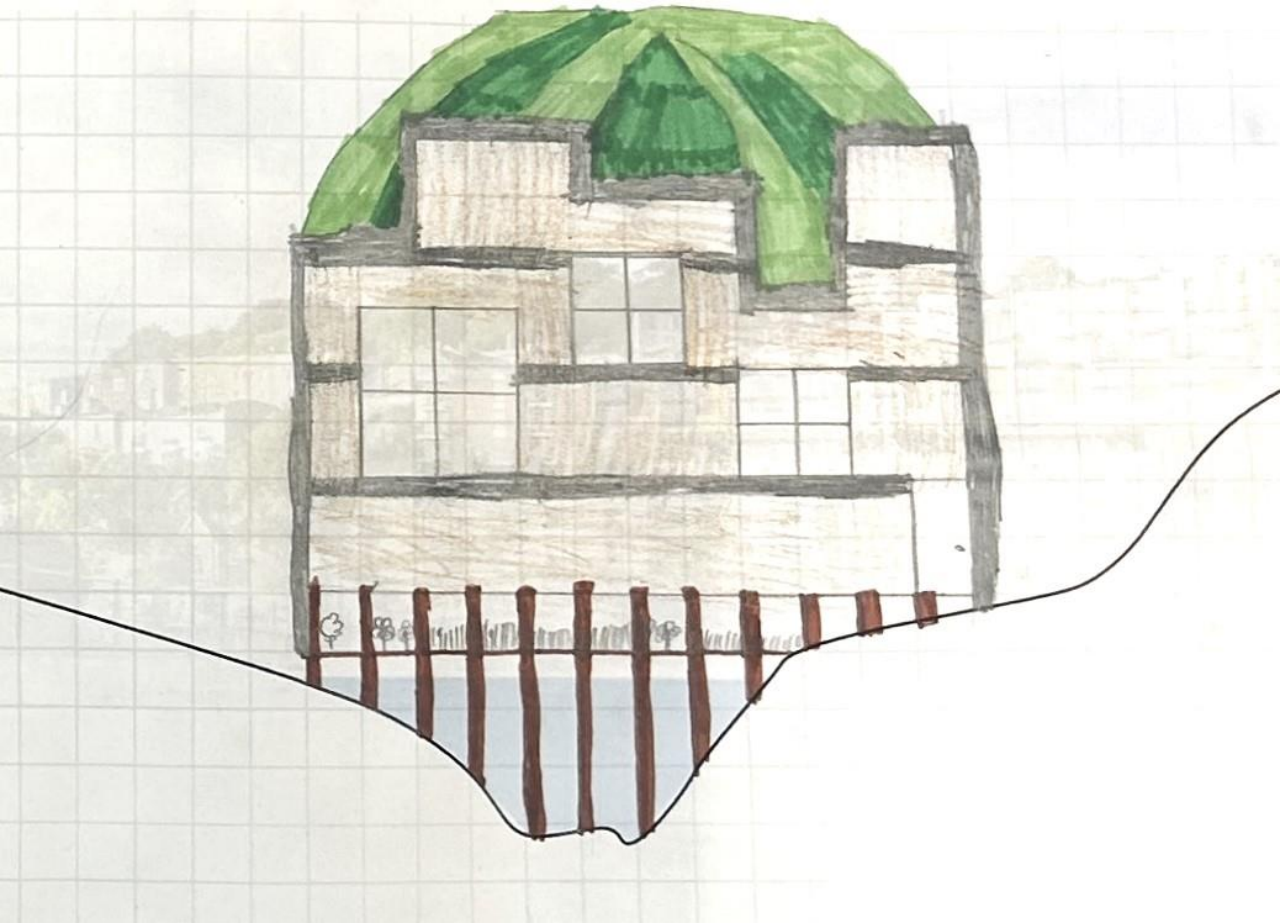


A city of domes with parks, farms and living spaces

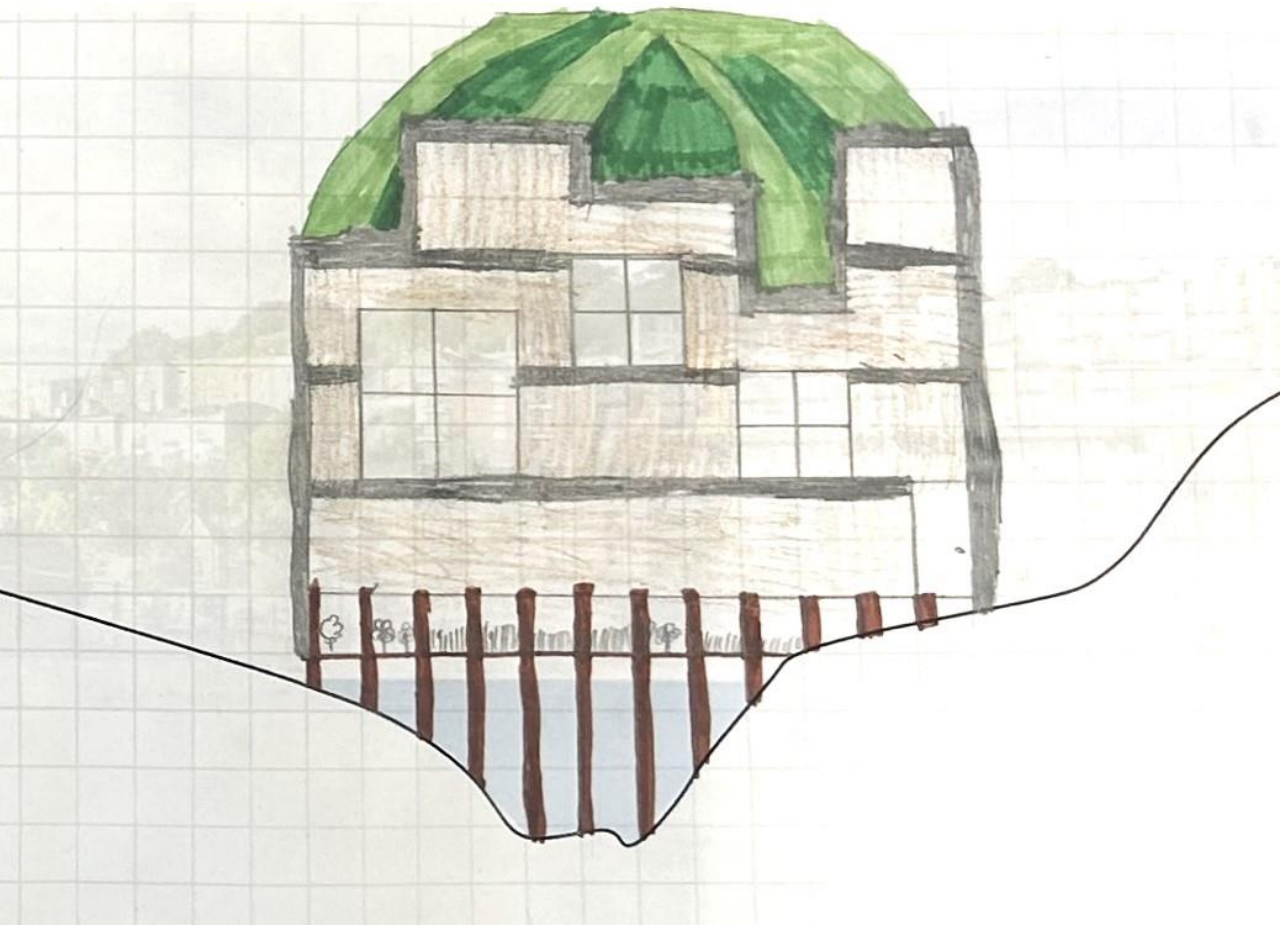
And complete with underwater cinema



Planet Melon

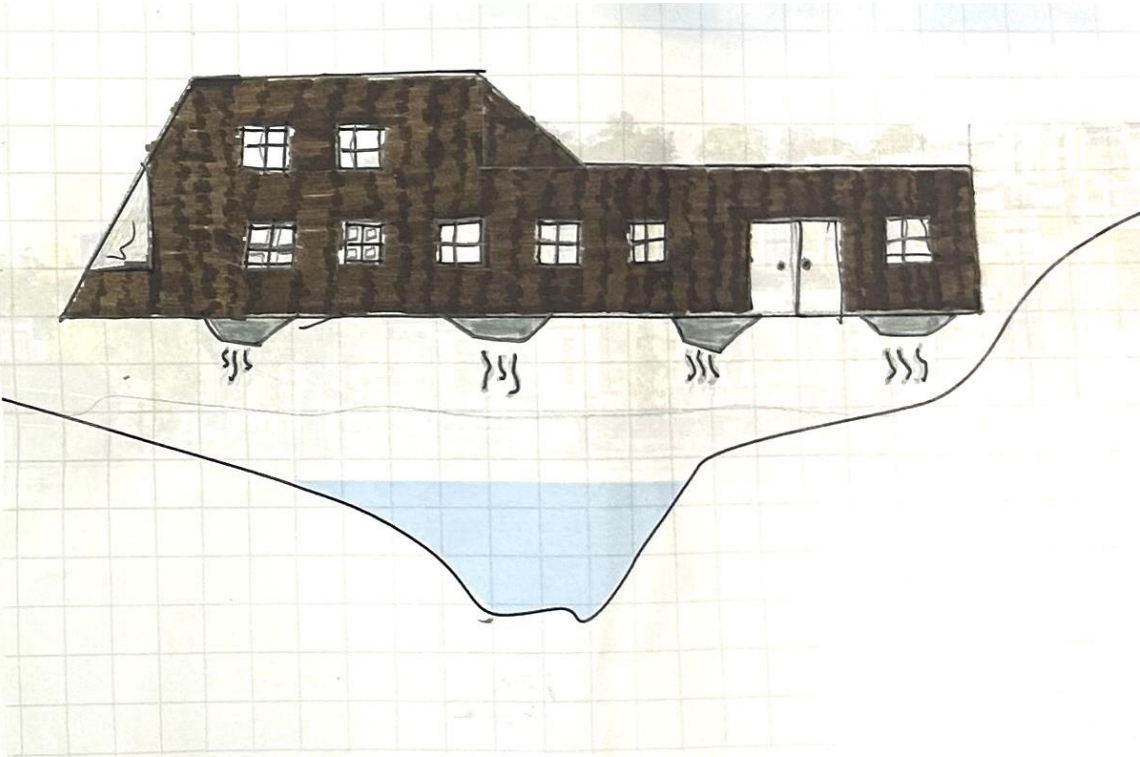


Planet Melon

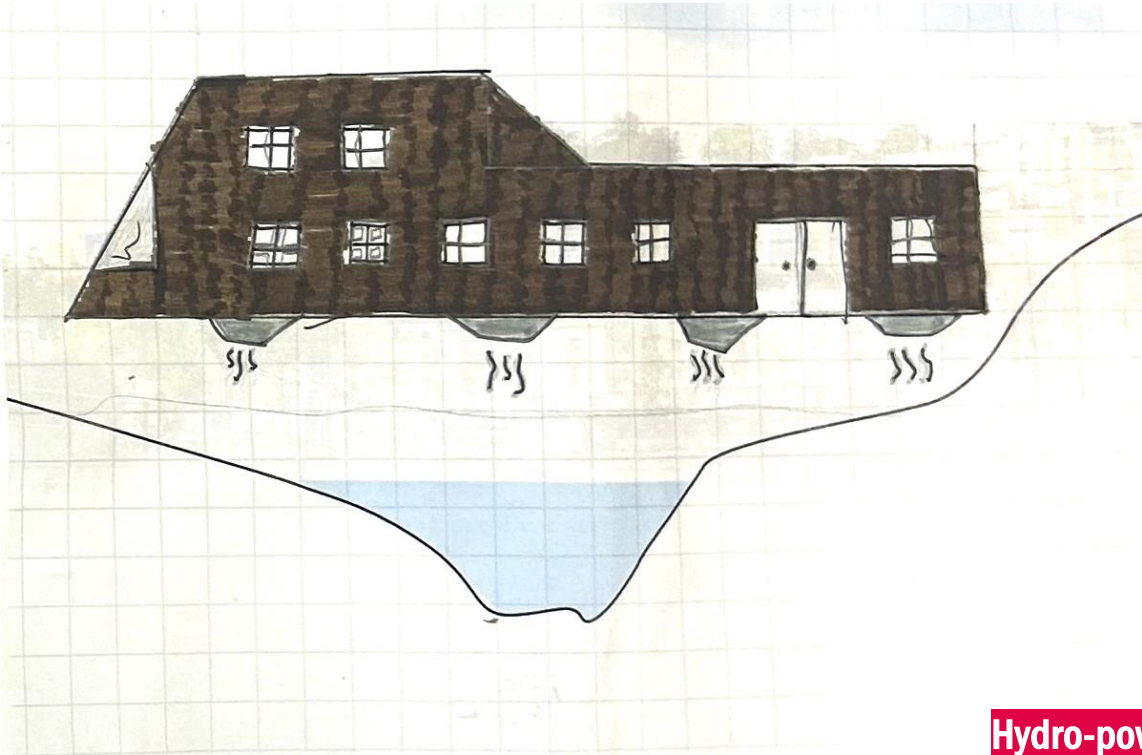


**A place to live made of all natural materials
and supported above the water on stilts**

The hovertrain

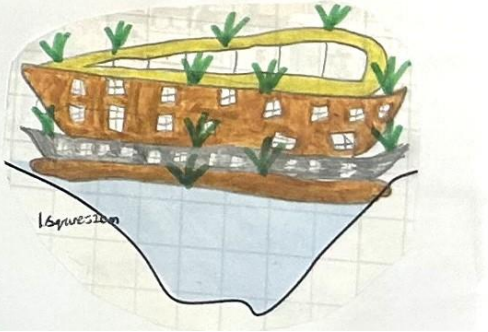
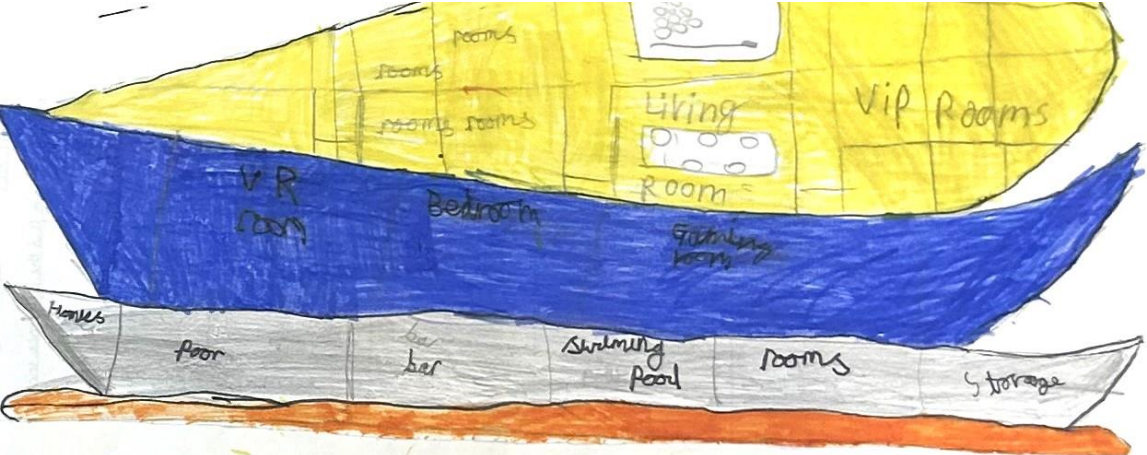


The hovertrain

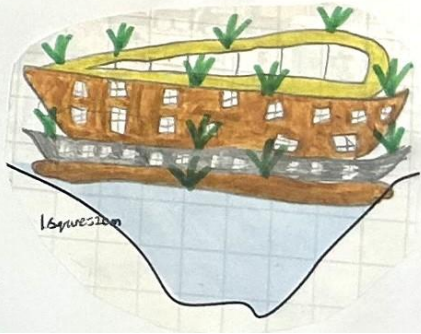
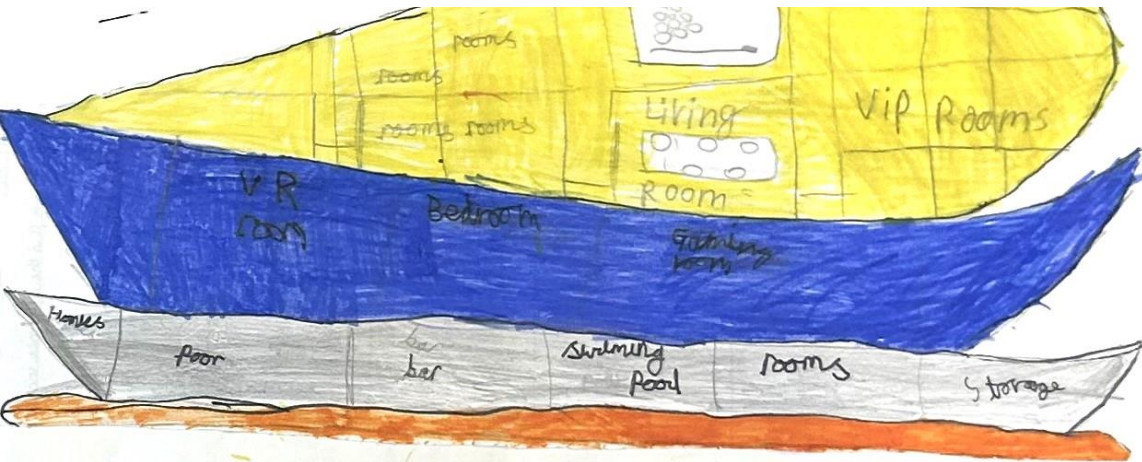


**Hydro-powered future mass transportation
to escape to higher ground**

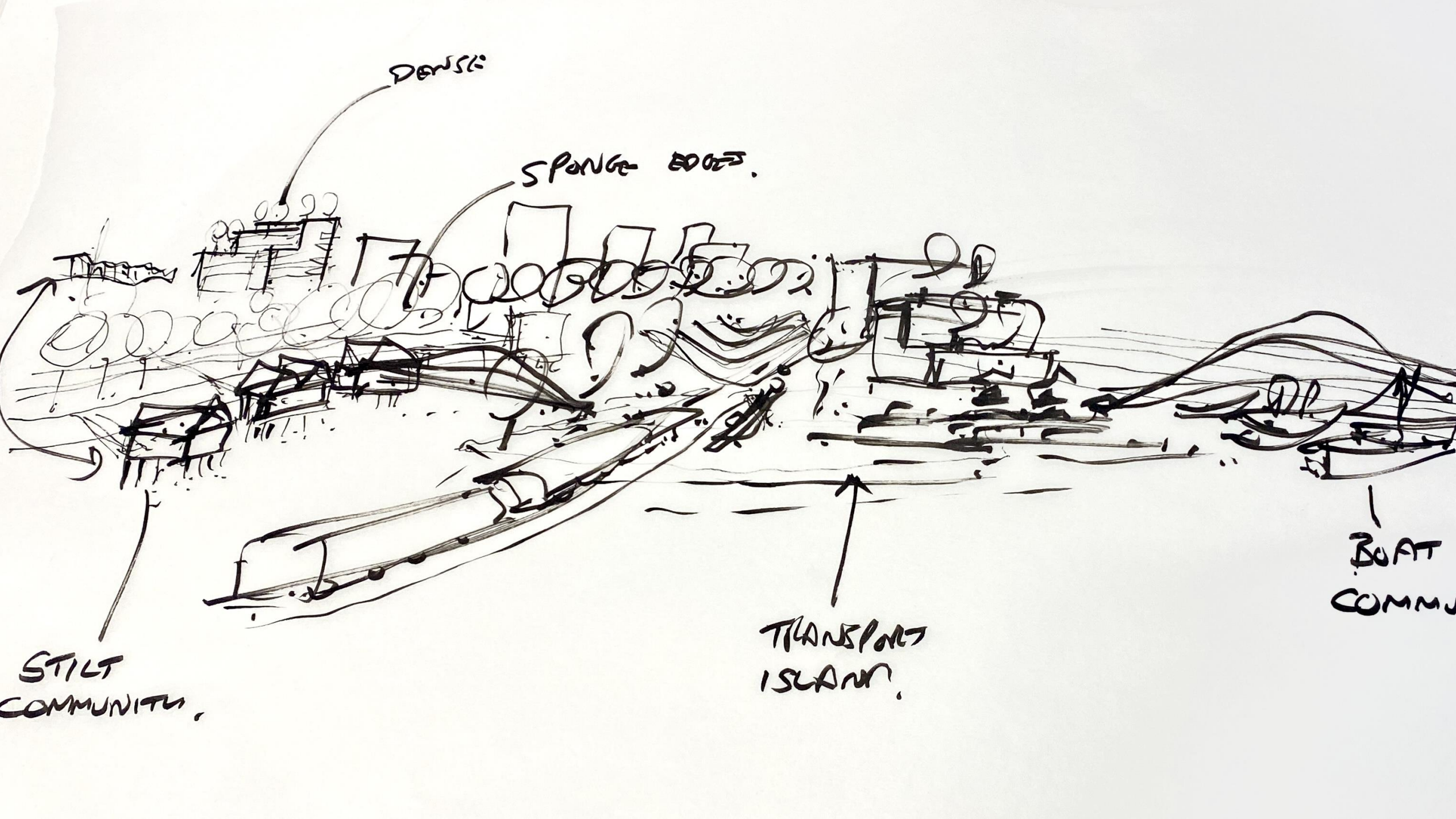
The minion boat



The minion boat



Boats with spaces for all and nature on board



DENSE

SPONGE EDGES.

STILT
COMMUNITY,

TRANSPORT
ISLAND.

BOAT
COMMUNITY

Our vision for Bristol Harbourside 2120...





Hand-drawn architectural sketches on a large sheet of paper, showing various building forms and structures.

Hand-drawn architectural sketches on a large sheet of paper, showing various building forms and structures. Labels include "Cinema room!!!", "Hospital", "Swimming", and "Pub".

Hand-drawn architectural sketches on a large sheet of paper, showing various building forms and structures. Labels include "HOTEL breiice", "Cinema room!!!", "Hospital", "Swimming", and "Pub".

Hand-drawn architectural sketches on a large sheet of paper, showing various building forms and structures. Labels include "HOTEL breiice", "Cinema room!!!", "Hospital", "Swimming", and "Pub".

Hand-drawn architectural sketches on a large sheet of paper, showing various building forms and structures. Labels include "HOTEL breiice", "Cinema room!!!", "Hospital", "Swimming", and "Pub".





Wrap up
Alistair Donaldson

14.30

A chance to view the childrens work up close

14.30-14.55

Please join us at the Tobacco Factory

15.00 onwards